



*Use your Boat More..
Make more friends..
Have more fun..*

Explorer Sundays



February 19: BIG motors by Jamie McPoland

Explore and have adventures with your own boat Mardele Gardiner and friends

- How to sign up for a cruise
- Overview of cruise destinations
- How to host a cruise
- How to prepare your boat to race
- Using your dinghy and electric boat in ABM
- Anchoring, picking up a mooring, rafting up
- Reciprocals
- Committee Boat Responsibilities

2023 SEAL BEACH YC CRUISE SCHEDULE- THE JOURNEYS CONTINUE!

January 14-15th- Commodore Ball Cruise to Shoreline/Sunday Brunch at SYC- [Info- Dave Jones or Mardele](#)
March 17-19th -[Spring Fling-An entire weekend of Green Fling and Fun- Team Diana Bakken and Robin Janciales!](#)
March 31-April 2nd Avalon Golf Cruise -[Team Contact - Mrs. and Mrs. Davis!](#)
May 26-29th Memorial Day Cruise to Newport- [Team- Dock 35!](#)
June 9th-11th Cat Harbor / Island - [Team - Brad and Kim Bergeron !](#)
July 2nd-Patriotic Dingy and Duffy Parade- Flood the Bay with RW&B!- [Team Captain D&D](#)
July 21-23rd-Island Event Isthmus Catalina - [Team-Ed and Peggy Chmiel!](#)
August 4-18th-Long Cruise to San Diego- [Team- Joan Palango !](#)
September 1-4th -Labor Day Cruise to Marina Del Rey -[Team- TBD!](#)
Sept29-OCT01-Avalon Golf Land and Sea Cruise- [Team- Bob Schweitzer !](#)
November 23-26 Thanksgiving- Cabrillo Yacht Club -
November 24-27 Thanksgiving- Royal Caribbean Cruise-[Team Diana Bakken.](#)



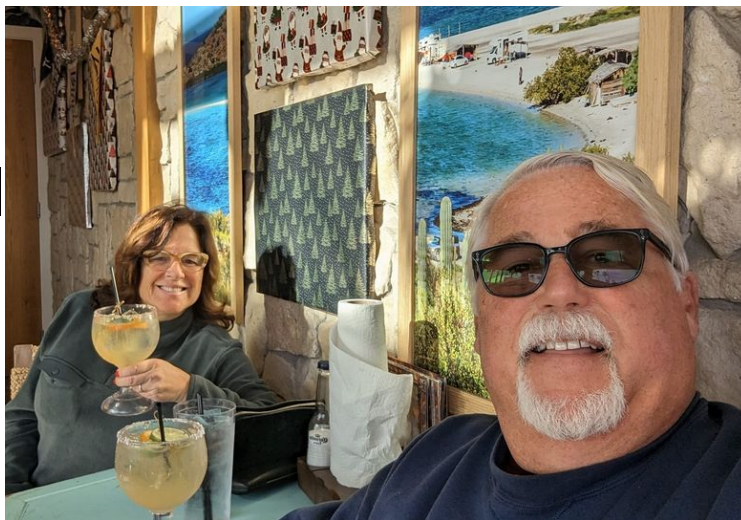
Future Day Cruises, Land Cruises and spontaneous Cruises to be determined.
HOPING TO ADD AN ISLAND LONGER CRUISE..
CALL MARDELE FOR SUGGESTIONS OR VOLUNTEER OPORTUNITIES

Sign Up On [SIBYC.com](https://www.sibyc.com)



Hosting an Event

Ed and Peggy Chmiel



Spring Fling March 17 - 19

Hosts: Diana Bakken and Robin Janciales



Avalon Golf Cruise:

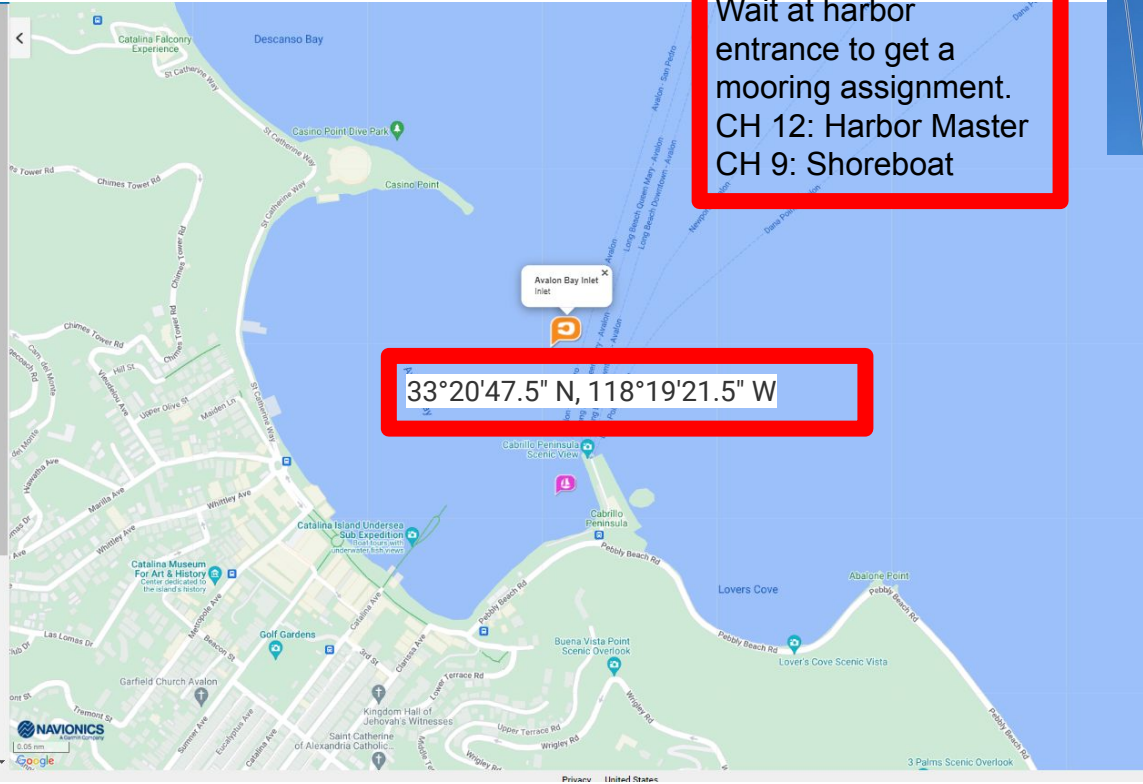
March 31 - April 2: Dan and Maria Davia
Sept 29 - Oct 1: Bob Schwitzer

Avalon Bay Inlet
Last Updated: 1/1/2008
33°20'47.5" N, 118°19'21.5" W Move

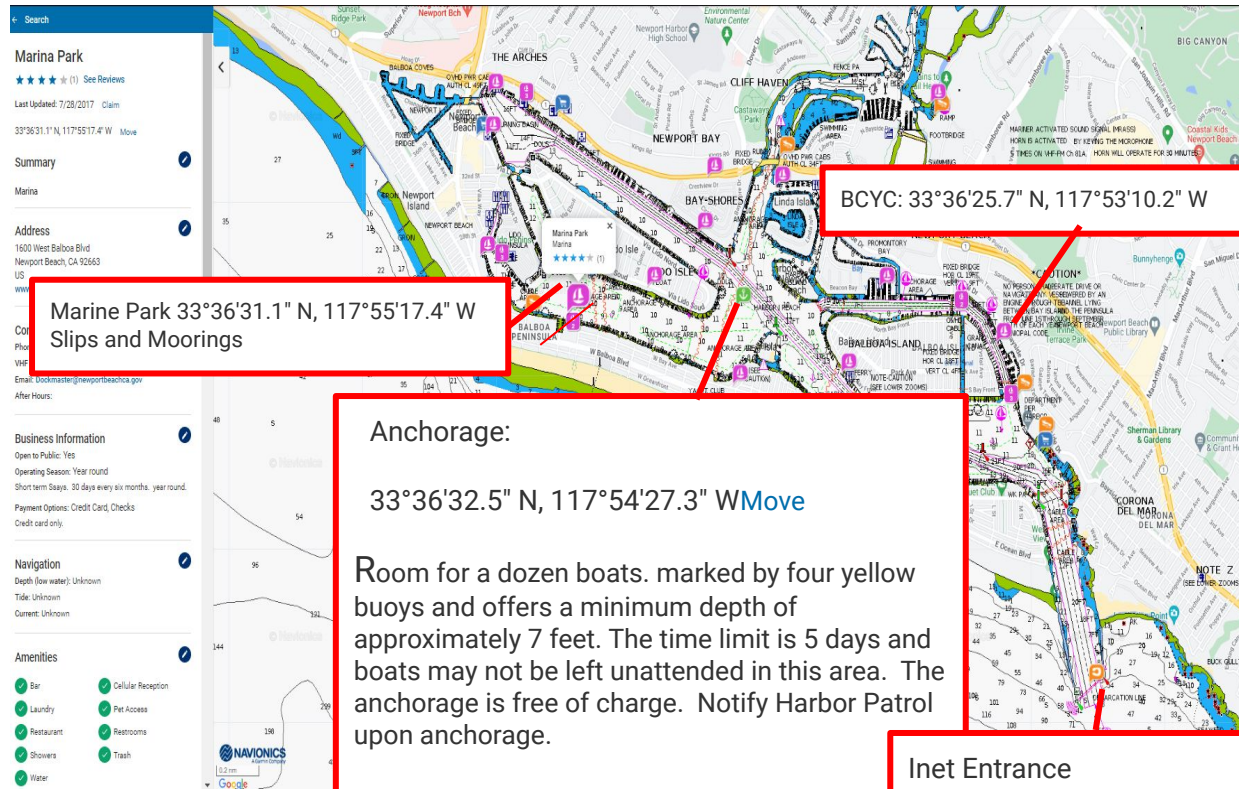
Summary

Inlet

Avalon Bay is entered between Casino Point, breakwater on the N and the breakwater extending from Cabrillo Peninsula, on the S. The breakwaters are marked by lights on their seaward ends. The small bay has depths of 2 to 13 fathoms; a depth of 20 fathoms is immediately outside the points of the bay. The harbormaster reports that shelter is good during SW, NW, and SE weather if the wind does not exceed 20 knots. The breakwater provides limited protection in the NW and SE ends of the harbor during NE Santa Ana winds that occasionally blow during the fall and winter. A large white circular building, brilliantly illuminated for about half the night during summer, is on Casino Point. Avalon, an incorporated city and part of Los Angeles County, is an extensive resort and the principal settlement of the island. Daily ferry and helicopter service is maintained year round to San Pedro, Long Beach, Newport Beach, Marine del Rey, and Dana Point. A road along this road are conspicuous from San Pedro Channel. The bay is extremely popular as a yacht haven and vacation resort during the summer. Yachting and fishboat supplies, limited engine and underwater repair facilities, and towing service are available at Avalon. A pleasure pier with various loading floats, concessions, equipment rental firms and a 2-ton hoist are in the S part of Avalon Bay. There are three, 100-foot floating docks, with reported depths of 30 feet alongside, on the E side of the Cabrillo Mole (Cabrillo Peninsula). The Cabrillo Mole floats are used by passenger vessels that operate to the mainland, and are available to any vessel through prior arrangement with the harbormaster. Yachts and other small craft moor to buoys in the bay; there are no alongside berths. The mooring buoys in the bay are privately owned. The harbormaster will rent mooring buoys that are not reserved by the owner to vessels on a daily basis. The harbormaster, located on the pleasure pier, offers 24 hour service year round and can be reached on VHF-FM channel 12 and 16 or call 310-310-0535. A harbor patrol boat will meet visiting yachts at the harbor entrance upon arrival and will assign them to a mooring if desired; a fee is collected for the daily use of moorings. Shoreboats can be reached on VHF-FM channel 9. Emergency rescue services are available at Avalon. The fire and rescue boat can be contacted through the Coast Guard or the harbormaster at Avalon on VHF-FM channel 16, 24 hours a day; the call sign is 'Baywatch Avalon'. Weather information for Avalon is broadcast by NOAA weather radio channel 1. Show Less

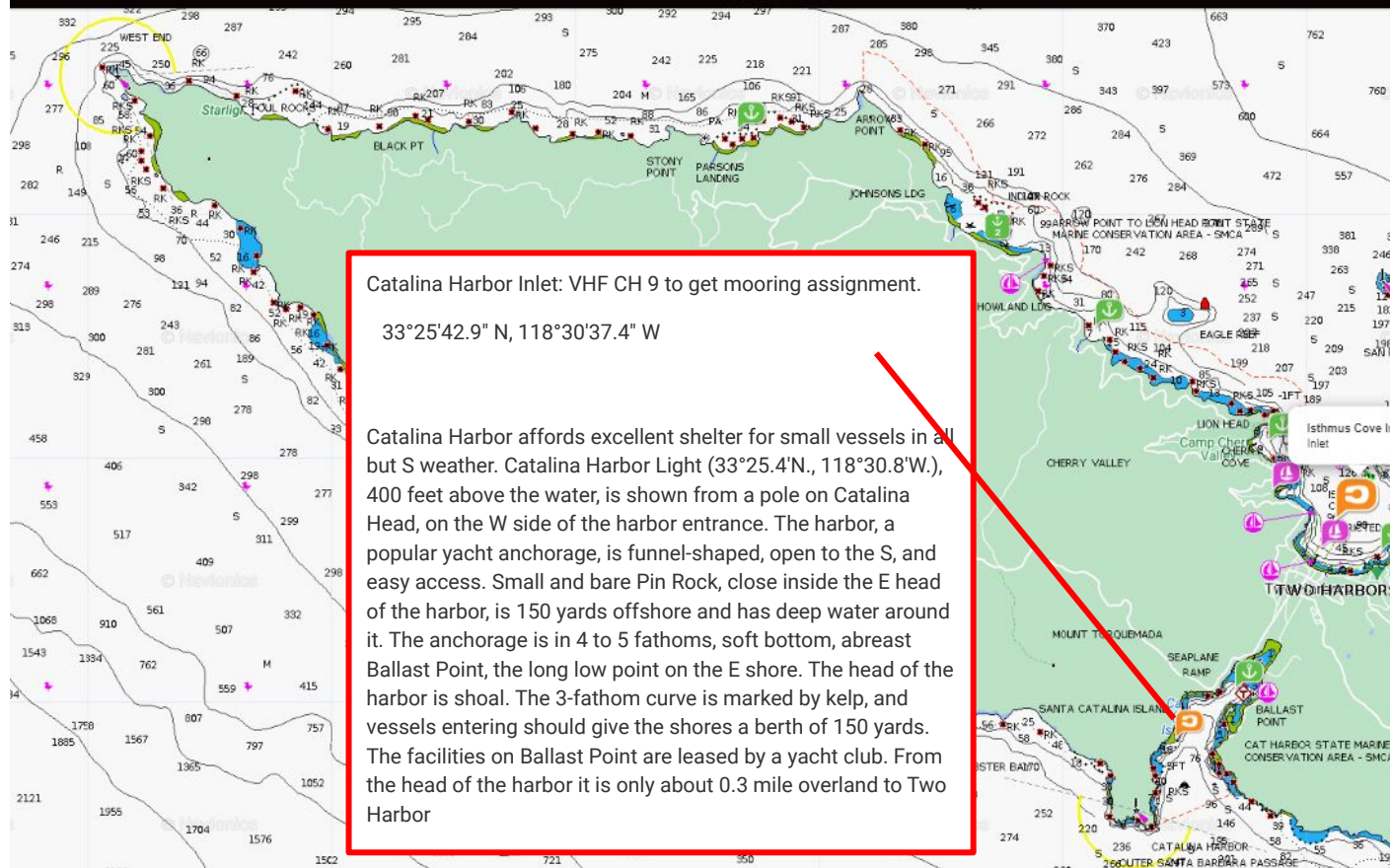


Memorial Day Cruise to Newport: May 26 - 29: Team Dock 35



Cat Harbor: June 9 - 11

Brad and Kim Bergeron



Catalina Harbor Inlet: VHF CH 9 to get mooring assignment.

$33^{\circ}25'42.9''$ N, $118^{\circ}30'37.4''$ W

Catalina Harbor affords excellent shelter for small vessels in all but S weather. Catalina Harbor Light ($33^{\circ}25.4'N$, $118^{\circ}30.8'W$), 400 feet above the water, is shown from a pole on Catalina Head, on the W side of the harbor entrance. The harbor, a popular yacht anchorage, is funnel-shaped, open to the S, and easy access. Small and bare Pin Rock, close inside the E head of the harbor, is 150 yards offshore and has deep water around it. The anchorage is in 4 to 5 fathoms, soft bottom, abreast Ballast Point, the long low point on the E shore. The head of the harbor is shoal. The 3-fathom curve is marked by kelp, and vessels entering should give the shores a berth of 150 yards. The facilities on Ballast Point are leased by a yacht club. From the head of the harbor it is only about 0.3 mile overland to Two Harbor

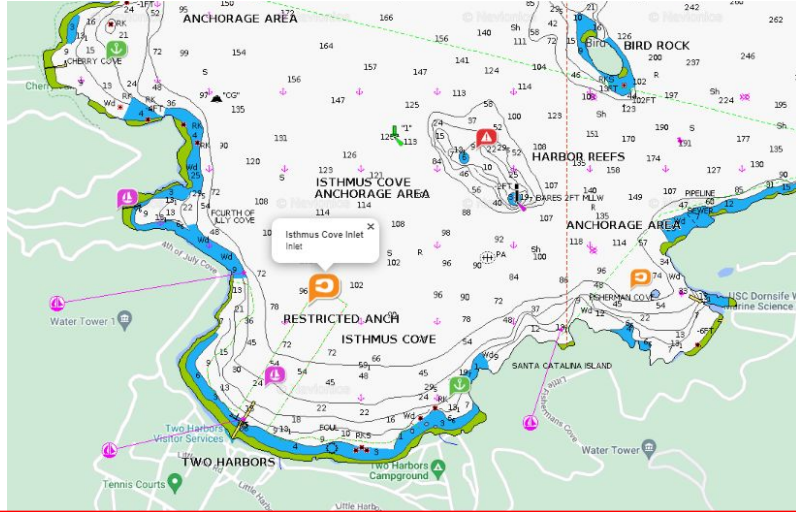


Patriotic Dinghy and Duffy Parade - July 2nd



Island Event: July 21 - 23, Isthmus Catalina

Hosts: Ed and Peggy Chmiel



Isthmus Cove Inlet:
33°26'41.7" N, 118°29'45.5" W
Two Harbors Enterprises manages and leases all coves and moorings outside the City of Avalon. Isthmus Harbor Base can be reached on VHF-FM channel 9 or call 310-510-4254. You can make reservations on line, call them to find out the details.
The fire and rescue boat can be contacted through the Coast Guard or on VHF-FM channel 16 from 0900 to 1700 daily; the call sign is "Baywatch Isthmus."



Long Cruise Tentative Plan: Aug 4 to 18

Joan Palango



August 2023 – GAME PLAN, RESERVATIONS PENDING

Sun	Mon	Tue	Wed	Thur	Fri	Sat
					>> BCYC 17NM 6:00 Dinner	BCYC YOYO
BCYC 10AM Buffet Breakfast	>> Oceanside, Jolly Roger Dock 40NM 6ish: Dinner on Dock	Jolly Roger Dock 10ish: Brunch on Dock	>> Mission Bay 30 NM Lunch/Dinner: YOYO	Mission Bay 4ish: Rubber Duck Races	>> Coronado Cays YC 25NM 6:00: Dinner at CCYC 8ish: Dessert on Dock	Coronado Cays YC 2:00 Bocce Tourney, BBQ and Pool Party
Coronado Cays YC 10AM Brunch at CCYC 6ish: Leftovers on the dock	>>Coronado YC 7 NM 4PM: Happy Hour	Coronado YC yoyo	>> San Diego Yacht Club 10NM 4:00 Happy Hour at the SDYC bar. No Host. Dinner: YOYO	San Diego Yacht Club 4:00 Happy Hour at the SDYC bar. No host	San Diego Yacht Club 6:00 End of Cruise Dinner. On Patio. No host	

1 NM = 1.15 statute mile

Travel home:YOYO

After Cruise 19,20 at Southwestern YC

Long Cruise



BCYC



Oceanside Jolly Roger Dock



Coronado YC



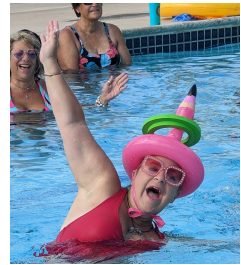
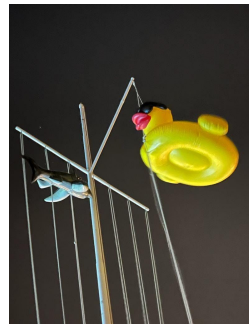
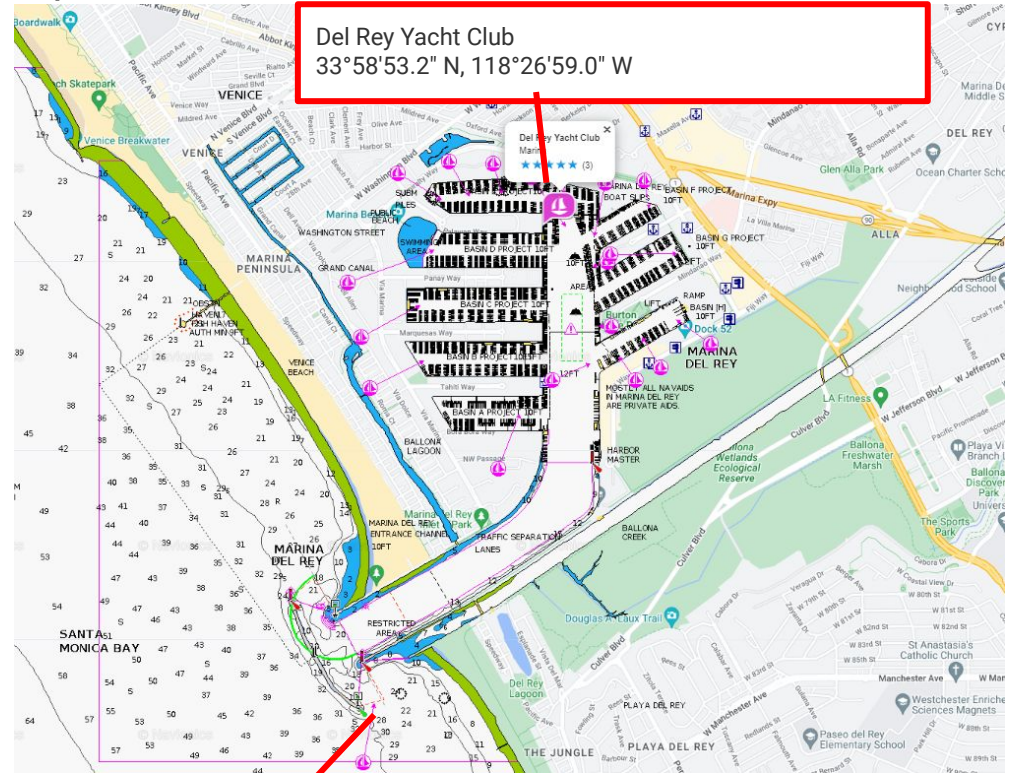
San Diego Yacht Club



Mission Bay on Anchor

Labor Day Cruise to Marina del Rey

Sept 1 - 4: **HOST: TBD**

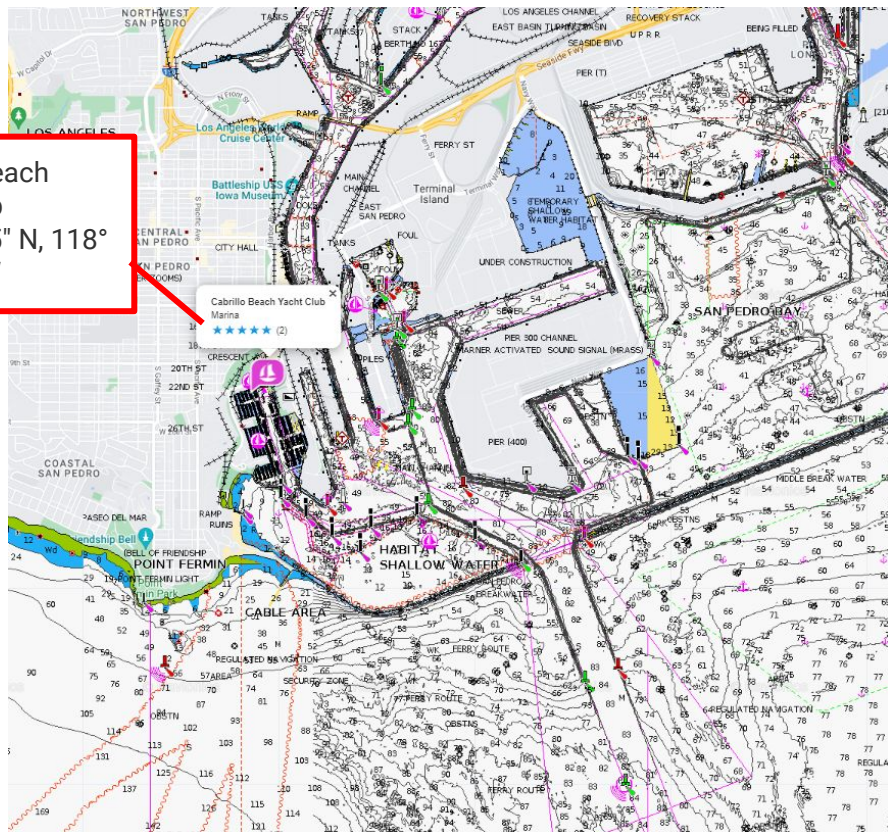


Thanksgiving Cruise Cabrillo Yacht Club

NOv 23 - 26



Cabrillo Beach
Yacht Club
33°43'26.5" N, 118°
16'55.5" W



Dinghy around the Bay with Eric



Sailing: Race your own boat

Seal Beach Yacht Club Races

- PHRF
 - Classes
 - Handicap
- Registered with a Yacht Club.
 - SIBYC (not SBYC)
- Safety at Sea Classes
- Rules
- How to determine the course
- Hints for outfitting your boat
- Getting Crew



February 4 & 5 and
February 25 & 26.



Seal Beach Yacht Club



Race Calendar 2023

www.slbyc.com



JAN 21, FEB 4, 18, MAR 11, 25
FEB 25 & 26
APRIL 15
MAY 4, 11, 18, 25, JUNE 1, 8
JUNE 15, 22, 29, JULY 6, 13, 20
JULY 8
JULY 27, AUG 3, 10, 17, 24, 31
AUG 26
SEPT 2
NOV 5, 19, DEC 3

SATURDAY SAILORS SERIES
SCYA MIDWINTER REGATTA
ENSENADA PREVIEW
POP TOPS SERIES 1
POP TOPS SERIES 2
SEAL BEACH TO DANA POINT
POP TOPS SERIES 3
HARBOR PURSUIT RACE
OUTLAW REGATTA (MIDR TO SB)
SUNDAY SAILORS SERIES



For more race info, see our website or
Contact: Bob Hubbard 562-822-4504 hubbarrc@gmail.com
Or: Terry Hanna 714-840-2383 tfhssailr@gmail.com

For membership info
Contact: SIBYC Office
562-594-6337

Preparing Your Boat To Race



Racing: Help Needed



Committee Boat
PRO
Finish Line
Racer Chaser
After Race BBQ



Sailing: Newport to Ensenada: Joe Negron



75th NEWPORT TO ENSENADA INTERNATIONAL YACHT RACE

APRIL 28-30, 2023



2 Races - 2 Finishes
Ensenada - San Diego
nosa.org - 949.220.4461



Ensenada Cruise: Nov 24 - 27

Royal Caribbean

Team Diana Bakken



Picking Up A Mooring



First Time?
If you need assistance, call
Harbor Patrol on VHF Channel 9.



Figure 1

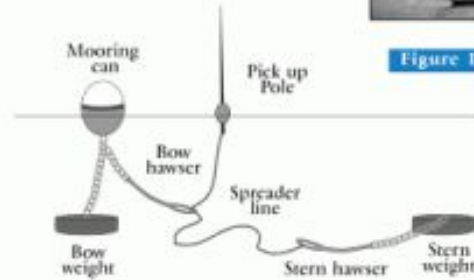
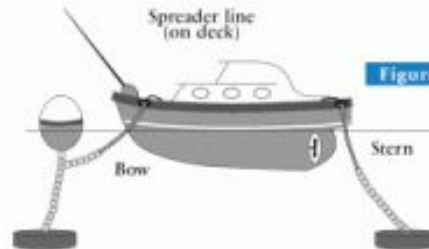


Figure 2



Rafting Up

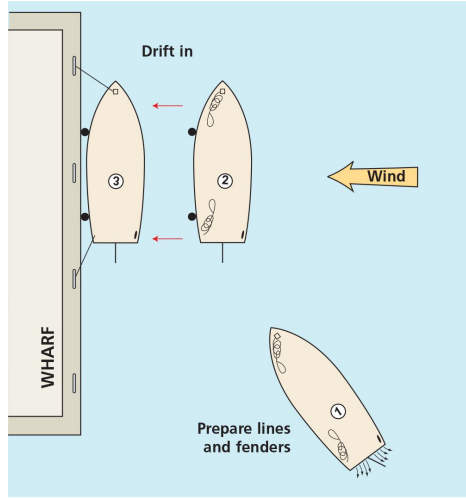
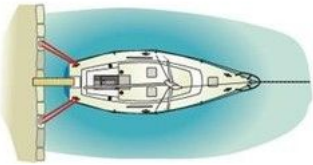
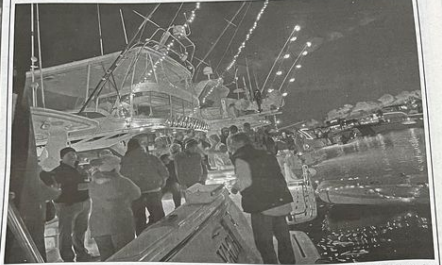


Figure A-6.9: Current / wind onshore



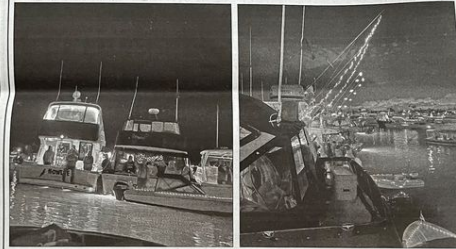
Med Tie, Stern In

Naples Christmas Parade



Photos courtesy of Seal Beach Yacht Club

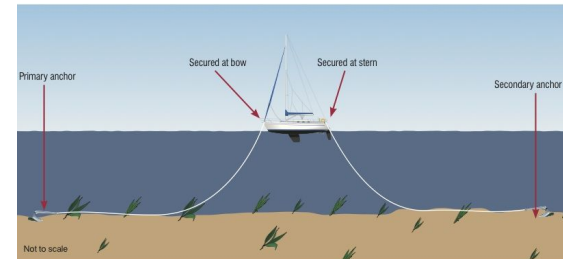
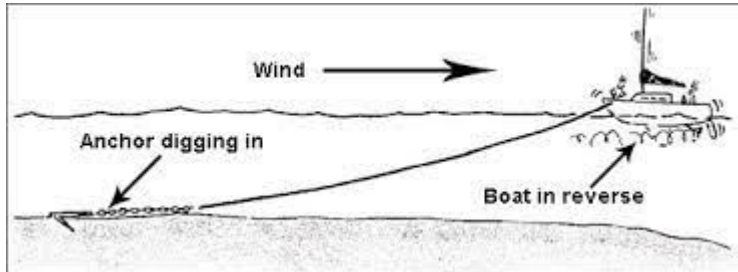
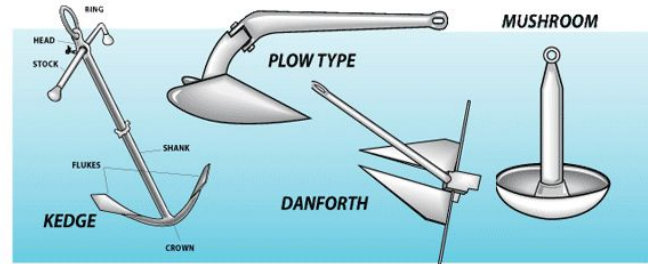
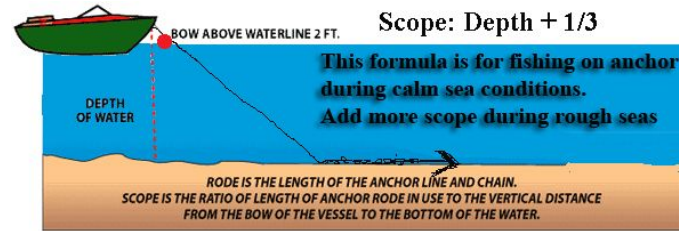
The Seal Beach Yacht Club gathered this past weekend for the Naples Christmas Parade. The club had more than 100 people aboard 13 decorated boats that sailed in Alamitos Bay. There were appetizers on each of the boats and Seal Beach Yacht Club members travelled via swim platforms to each boat to visit with friends to watch the parade and celebrate the holidays.



Anchoring

Boat Size	Anchor Size
Up to 22 feet	*7 lb Mini Hurricane
*Compact Model Designed To Replace Your Factory Anchor For Moderate Conditions - 20 mph Winds Or Less	

Full Size Models - Based On 30 mph Winds	
Boat Size	Anchor Size
Up to 19 feet	10 lb
20-27 feet	14 lb
28-34 feet	18 lb
35-42 feet	22 lb
42-60 feet	45 lb



Bareboating in Europe

Le Boat: <https://www.leboat.com/>

Flanders



Holland, Amsterdam and Friesland

